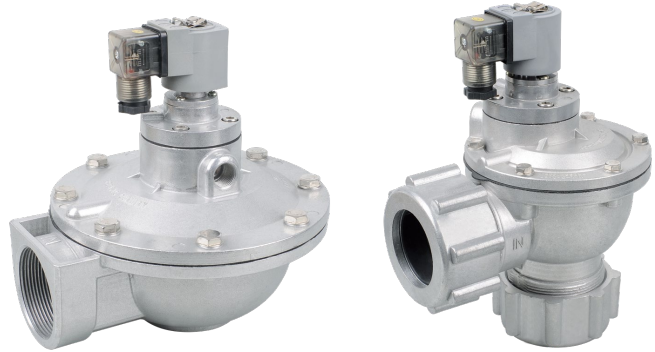


Valve

- DJF
- JELMP
- JELP/G
- MCS
- 4V100
- 4V200
- 4V300
- 4V400
- Manifold
- SV
- 3V1
- JEL
- 3VJZF
- 4VJZF
- MVSD
- VF, VZ
- BM
- Diaphragm
- Coil
- 2V
- 2W
- 2W(Big)
- 2P
- 2L
- VX
- PU
- PU225
- 2Q
- JEL5404
- JEL6213
- BU
- Pulse**
- JELJZF
- 4H
- TSV
- MPV
- 4HV
- HV, K
- 4R
- FV
- MSV
- JM
- ASC, RE
- QE, QEA
- ST
- HSV

## Feature

- Brought in advanced design and improved
- Applied for dust clear of compressed air switch in dust cleaning system.
- Key components materials are imported.
- Air control type, solenoid type and anti explosion solenoid type are available.
- Pipe type connecting ensures firmly and reliable installation.



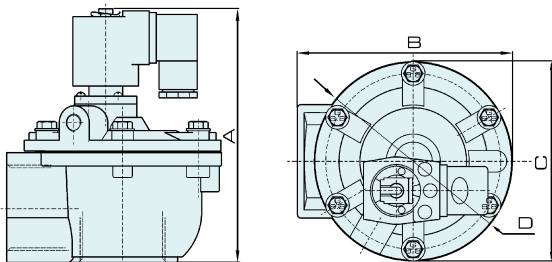
## Ordering Code

<b>JEL</b>	<b>Z</b>	<b>20</b>	<b>P</b>
↓	↓	↓	↓
JELPC	Z: Vertical type Solenoid Pulse Valve	Bore	Connection Form
		Ø 20 Ø 50 Ø 25 Ø 62 Ø 35 Ø 76 Ø 40 Ø 100	Blank : Normal screw A Tubing+threaded P Screw S Double diaphragm J Threaded (economical type) DD Pipe connecting type

## Specification

Model	Working pressure	Ambient Temperature	Humidity	Applied Medium	Voltage	Diaphragm life	Orifice	Thread
JEL-Z-20A	0.3~0.8 MPa	-5~55 °C	< 85%	Pure Air	AC110V AC220V DC24V	Above 1 Million Times	Ø 20	G 3/4"
JEL-Z-20P							Ø 20	G 3/4"
JEL-Z-20							Ø 20	G 3/4"
JEL-Z-25							Ø 25	G 1"
JEL-Z-25P							Ø 25	G 1"
JEL-Z-35P							Ø 35	G 1 1/2"
JEL-Z-40S							Ø 40	G 1 1/2"
JEL-Z-50S							Ø 50	G 2"
JEL-Z-62S							Ø 62	G 1 1/2"
JEL-Z-76S							Ø 76	G 3"
JEL-Z-100S	Ø 100	Ø 100						

## Overall Dimension



Model	JEL-Z-20A	JEL-Z-20P	JEL-Z-20	JEL-Z-25	JEL-Z-25P	JEL-Z-35P
A	173	124	110	110	124	142
B	145	105	90.5	90.5	105	121
C	-	82.5	75	75	82.5	-
D	Ø 90	-	-	-	-	Ø 112

Model	JEL-Z-40S	JEL-Z-50S	JEL-Z-62S	JEL-Z-76S	JEL-Z-100S
A	166	202	222	245	356.5
B	132	210	210	230.5	286.5
C	-	-	-	-	-
D	Ø 137	Ø 185	Ø 185	Ø 200	Ø 221